

A4400 - VA4Pro

**4CH Signal Analyser & Signal Recorder
in One Unit**



Many special modes inside:

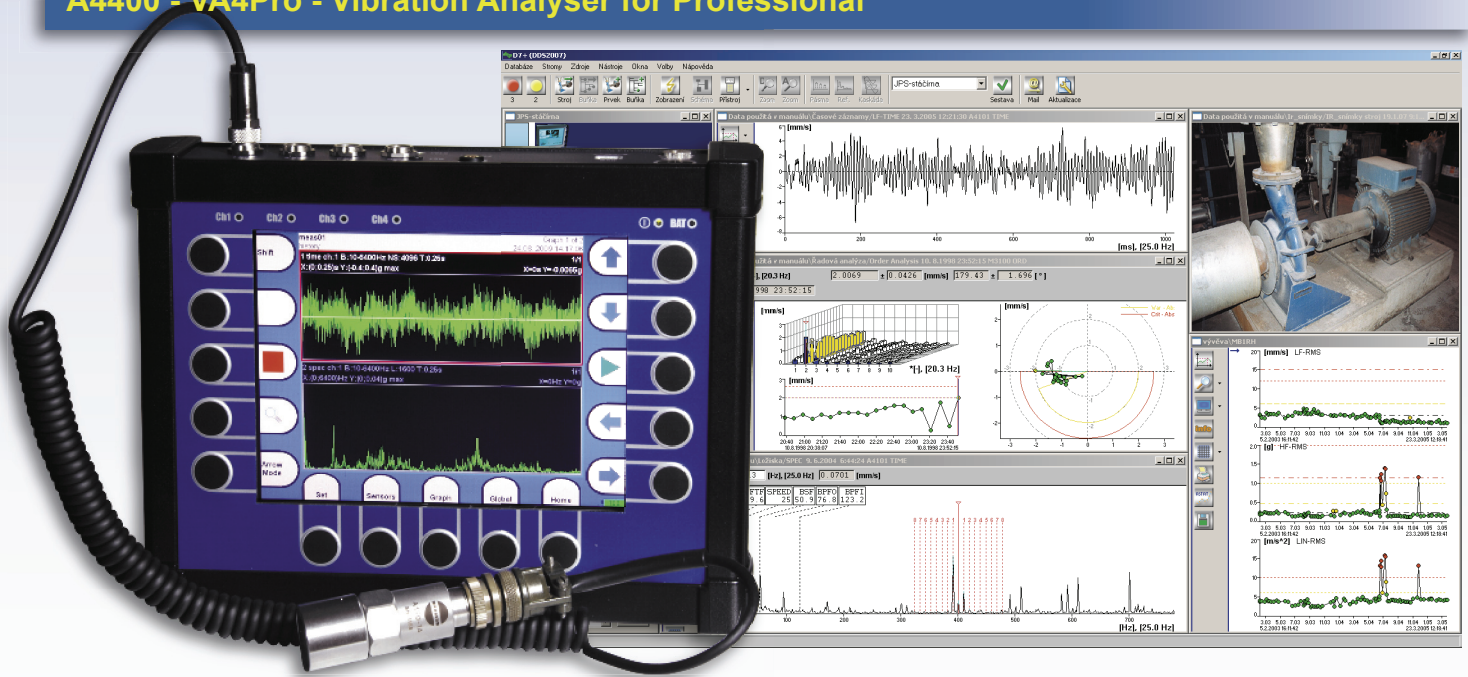
- Analyser,
- Data Collector (Route measurements),
- Run Up (Coast Down) measurements,
- Balancer,
- Signal Recorder.

**All modes made for: 4 AC simultaneous channels (ICP powered),
4 DC channels for process values,
1 Tacho channel.**

Next functions:

- 25 600 lines FFT, 24 bit A/D conversion,
- Parallel processors give high speed signal processing,
- 35 hours for 4 channels simultaneous recording with 25 600 Hz frequency range,
- Large colour high resolution display.

A4400 - VA4Pro - Vibration Analyser for Professional



A4400 - VA4Pro - Technical specification:

Input channels:	<ul style="list-style-type: none"> • 4 AC, ICP® power supply on/off • 4 DC for process values • 1 TACHO for external trigger 	Data processing:	<ul style="list-style-type: none"> • FFT real time analysis • ENVELOPE analysis • ACMT - low speed bearing analysis • order analysis • user band pass analysis • RPM measurement • DC measurement • Orbit measurement
Input range:	<ul style="list-style-type: none"> • AC +/- 12 V peak-peak • DC +/- 24 V 	Signal Recorder:	<ul style="list-style-type: none"> • 64 kHz sampling frequency • 4 Ch memory consumption 3 GB/hour • 4 Ch total recording - 35 hours
AD conversion:	<ul style="list-style-type: none"> • 24 bit, 64 bit internal signal processing • No AutoGain function! 	Trigger:	<ul style="list-style-type: none"> • manual, external, signal level, time • use for signal recording trigger • speed change, time interval
Dynamic range S/N:	<ul style="list-style-type: none"> • 120 dB 	Display:	<ul style="list-style-type: none"> • colour 800 x 600 pixels, LCD
Frequency ranges:	<ul style="list-style-type: none"> • max. 76 kHz (1 Ch, 196 kHz sampling) • max. 25 kHz (4 Ch, 64 kHz sampling) • min. 25 Hz (4 Ch, 64 Hz sampling) 	Communication:	<ul style="list-style-type: none"> • USB
Sampling mode:	<ul style="list-style-type: none"> • fully simultaneous for 4 channels 	Temperature range:	<ul style="list-style-type: none"> • -10°C to +50°C
FFT resolution:	<ul style="list-style-type: none"> • min. 100 lines • max. 25 600 lines 	Power::	<ul style="list-style-type: none"> • battery 5 hours operation, AC 230 V
Unit modes:	<ul style="list-style-type: none"> • Data-collector - route measurement • Analyser - analytic measurement • Balancer - on-site balancing • Run up / Coast down measurement • Recorder - signal recording 	Case :	<ul style="list-style-type: none"> • Aluminium Heavy Duty
Processor:	<ul style="list-style-type: none"> • Intel Atom 1,6 GHz 	Size & Weight:	<ul style="list-style-type: none"> • 230 x 140 x 60 mm • 2000 g
Memory, Route:	<ul style="list-style-type: none"> • 120 GB, max. 4 GB for one route, number of routes is limited by free memory only 		

Adash, Ltd.
 Hlubinska 32/1379
 702 00 Moravska Ostrava
 Czech republic

Tel.: +420 59 623 2670
 +420 59 623 2687
 Fax: +420 59 623 2671

www.adash.cz
www.adashservice.cz
 e-mail: info@adash.cz

